

**OFFICIAL COORDINATION REQUEST FOR
NON-ROUTINE OPERATIONS AND MAINTENANCE**

COORDINATION TITLE - 14 LWG 20 Unit 3 NERC/WECC exciter testing

COORDINATION DATE - November 5, 2014

PROJECT - Lower Granite Dam

RESPONSE DATE - November 13, 2014

Description of the problem

Unit 3 exciter testing is required to meet NERC (North American Reliability Corporation) / WECC (Western Electricity Coordinating Council) standards by December 1. These tests ensure compliance with industry accepted equipment, safety and reliability standards for operation of the power grid. Exciters are electrical components that control generator output. These tests determine whether relays and other exciter protection equipment are functioning properly. Normally, these exciter test are conducted during annual maintenance or other scheduled outages. Unit 3 did not have any scheduled maintenance in recent months, making this outage necessary. Scheduling the outage on November 17 will ensure compliance with NERC/WECC standards and the continued availability of Unit 3.

Type of outage required

This work will require unit 3 to be removed from service from 1200-1700 hours on November 17.

Impact on facility operation

Unit 3 will be out of service from 1200-1700 hours.

Dates of impacts/repairs

From 1200-1700 hours on November 17.

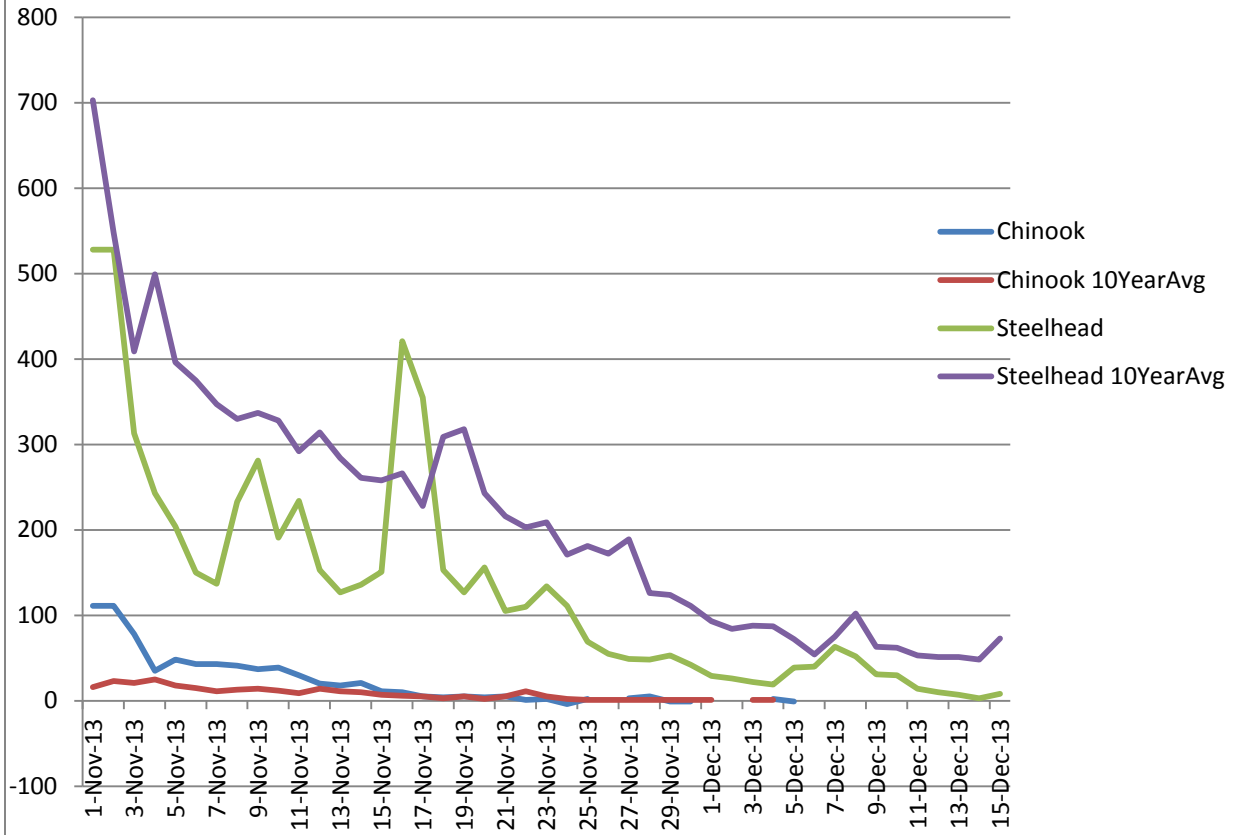
Length of time for repairs

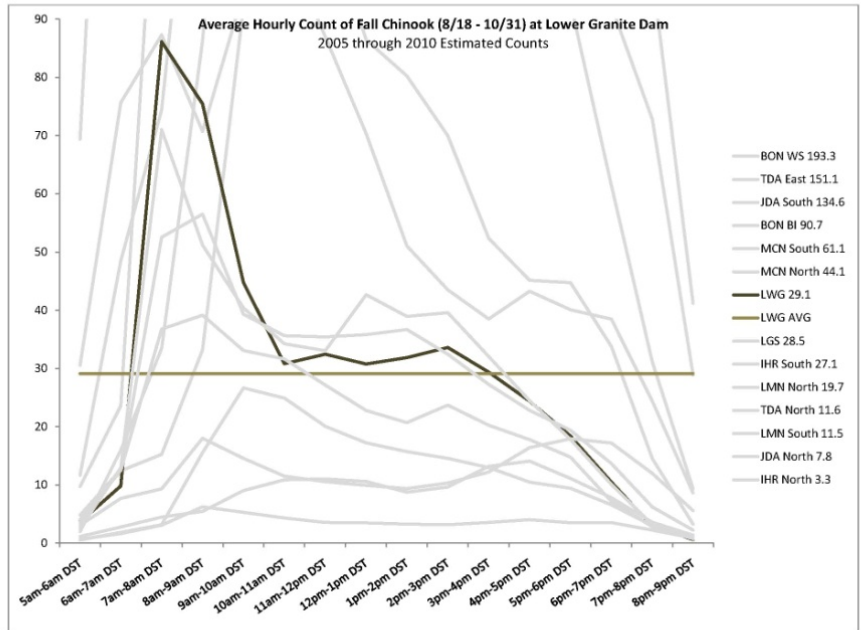
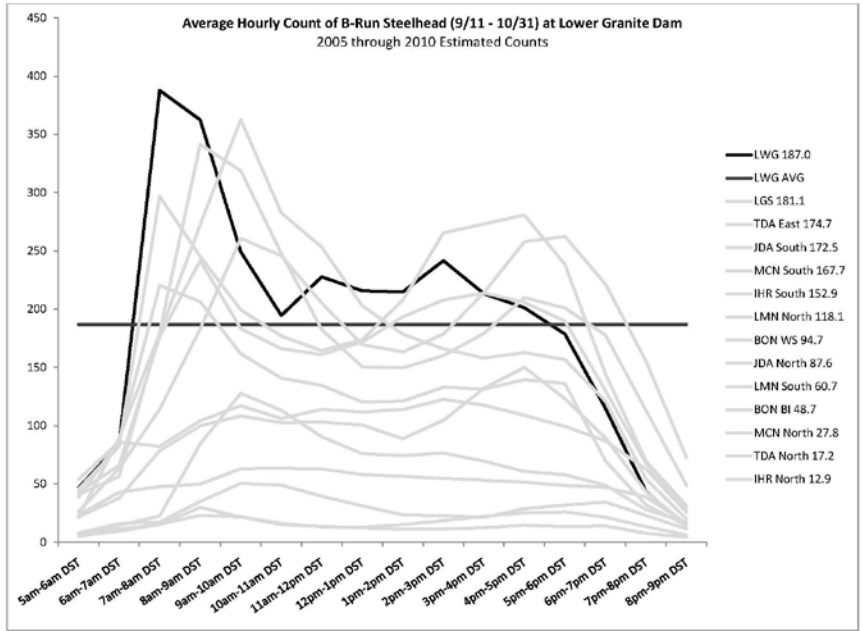
Testing is estimated to take five hours or less.

Expected impacts on fish passage

Impact to fish passage will be minimal. Lower Granite is currently operating two generating units during the day due to current river flows. Unit 3 is the second in operating priority then units 4 - 6 any order. During the unit 3 outage, unit 2 and either unit 4 or unit 6 will be operated. This operation may impact fish ladder attraction for adult passage. Based on the ten year average about 5 Chinook, 2 Chinook jacks, 246 steelhead, and 1 coho (DART) ascend the Lower Granite fish ladder daily from November 17 through November 23. Average hourly counts from 2005 through 2010 indicate that both fall Chinook and steelhead passage peak in the morning and begin to decline at about 1100 hours. This work is scheduled at to begin at 1200 hours as to minimize impacts to adult fish passage.

**Lower Granite Dam
November 1 -December 15 Adult Passage
Daily 2013 Data and 10 Year Averages**





Comments from agencies

-----Original Message-----

From: Bill Hevlin - NOAA Federal [mailto:bill.hevlin@noaa.gov]
Sent: Thursday, November 06, 2014 12:28 PM
To: Bailey, John C NWW
Cc: Erick VanDyke; Trevor Conder - NOAA Federal; Bill Hevlin - NOAA Federal;
Tom Lorz; Ritchie Graves - NOAA Federal
Subject: [EXTERNAL] Re: 14 LGW 20 - Unit 3 NERC/WECC Exciter Tests

John,

Thank you for coordinating with NOAA Fisheries on the 14 LGW 20 Unit 3 NERC/WECC exciter testing at Lower Granite Dam. As I understand, the Corps requests that the Fish Passage Plan unit operation priority order be altered for 5 afternoon hours on November 17, 2014, in order to shut down unit 3 and test its exciter. When unit 3 is down, unit 4, next in priority order, will be operating. This short afternoon change in unit operation priority should not be a problem for adult passage because unit 2, which is the priority unit for adult attraction to the powerhouse ladder entrance, will be in continuous operation throughout the day. Therefore, NOAA Fisheries does not have a problem with the Corps's request.

Bill Hevlin
NOAA Fisheries

Final results

These results are taken from the 13 November 2014 FPOM meeting minutes under item 5.2.1: "Bailey explained the MOC. FPOM concurred".

Please email or call with questions or concerns.

Thank you,
Elizabeth Holdren
Supervisory Fisheries Biologist
Lower Granite Lock and Dam
Ph. 1(509)843-1493 ext.263
Elizabeth.a.holdren@usace.army.mil